



ZB2044 TELEHANDLER

Ideal for bridge construction, power plant services, and heavy construction, Skyjack's ZB2044 is in a class of its own. With a maximum capacity of 20,000 lbs. (9,072 kg), the ZB2044 features a three-section boom for a lift height of 44' 10" (13.67 m). Robust, rugged, and reliable, the ZB2044 offers unparalleled jobsite productivity, and its superior maneuverability and mobility make it the perfect substitute for heavy cranes and handlers.



SKYJACK

ZB2044 TELEHANDLER

20,000 lbs (9,072 kg) capacity, 44' 10" (13.67 m) maximum lift height

DIMENSIONS

Wheelbase.....	11'6"	3.51 m
Overall Width.....	8'6"	2.59 m
Overall Height (stowed)	9'	2.74 m
Overall Length (less forks)	20'3"	6.17 m
Ground Clearance	18"	46 cm
Operating Weight	45,000 lb	20,412 kg
Turning Radius (outside).....	18'4"	5.59 m
Frame leveling (degrees).....	+/- 8	

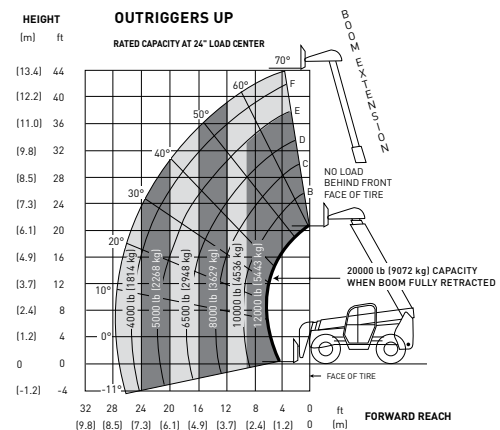
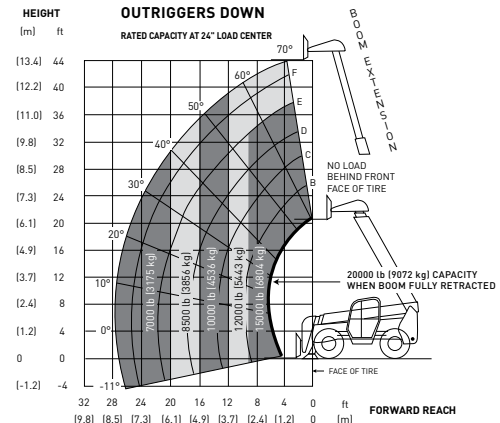
SPECIFICATIONS

Engine	Cummins Tier 3 QSB 4.5C Turbocharged Diesel
HP @ rpm	160 horsepower @ 2500 rpm
Transmission.....	Dana powershift, 3 speeds forward and reverse
Top speed	20.5 mph (33 km/h)
Axles.....	Axletech steerable outboard planetary
Brakes.....	Service - 4 wheel dry disc
	Parking - pinion mounted dry disc on front axle
Tires	17.5 x 25 16PR grip lug
Steering.....	3 mode (2 wheel, 4 wheel, crab)
Boom.....	Maximum lift height - 44' 10" (13.67 m)
	Maximum forward reach - 27' 5" (8.36 m)
	Dual shaft type carriage
	Carriage rollback - 19 degrees
	Carriage forward tilt - 80 degrees
General.....	Hydraulic tank capacity - 55 US gal. (208L)
	Fuel tank capacity- 49 US gal. (185L)
	12 volt - 105 amp. alternator

STANDARD EQUIPMENT

- Outriggers
- Rear Axle "Stable-Lock" Cylinder with backup accumulator
- Standard quick attach carriage mount system
- Dual lift cylinders
- High pivot boom mount design
- ROPS/FOPS certified cab
- Rear window and side screen
- Lockable under cab storage compartment / step
- Adjustable Suspension Seat with seat belt
- Dual joystick pilot operated controls for boom and frame level functions
- Tilt adjustable joystick console
- Gauge instrumentation
- Electronic Powerview engine monitor/gauge
- Lockable steel swing up engine doors
- Engine Grid Heater
- Dual element air cleaner with flow restriction indicator
- Dual batteries
- Independent Front/Rear Brake Systems
- Dual brake accumulators for Dead Engine Braking
- Brake Activated Transmission Disconnect
- 55 (208L) gallon steel hydraulic tank
- 49 (185L) gallon steel fuel tank
- Horn and backup alarm
- Mirrors, right and left side
- Remote grease fittings for axle trunnion mount lubrication
- Easy to remove steel component and access covers
- Operator/Maintenance and Parts manuals
- 12 months/2000 hour warranty (4 years on structure)

CAPACITY CHART



OPTIONAL EQUIPMENT

- Flashing Beacon Light
- Lighting Kit w/ Guards - 2 Front white / 2 Rear Red
- Front and Rear Turn Signals w/ Flashers
- Extra Operating Light with Guard
- Boom Mounted Operating Lights
- Auxiliary Hydraulic Group for Boom Attachments
- Front and Rear Fenders
- Fully Enclosed Operator Cab, Sound Insulation, Heater, Defroster, Dome Light, Front and Top Windshield Wiper
- Air Conditioning - requires enclosed cab option
- Mine Package (Backup Braking & Steering Systems, Drive Shaft Covers)
- Foam Filled Tires

ATTACHMENTS

- Various Carriage/Fork Sizes
- Fork Positioner
- Sideshift Carriage
- 5 ft Jib Boom (20,000 lbs Capacity)
- 2.0 Cu. Yd. Light Material Handling Bucket
- Hydraulic Winch (15,000 lbs Capacity)*
- Pipe and Pole Clamp*
- Rotating Pipe and Pole Manipulator*
- Bridge Stripper*

Note: Materials and specifications are subject to change without notice.



Skyjack Head Office

55 Campbell Rd. Guelph, ON Canada N1H 1B9
 Sales Inquiries: 1-877-755-4387 (1-877-SJLIFTS)
 Main Switchboard: 1-800-265-2738
 Phone: 519-837-0888
 Fax: 519-837-8104
 Email: skyjack@skyjack.com

www.skyjack.com

IMPORTANT

- Machine design complies with ANSI/ITSDF B56.6-2005 stability requirements for rough terrain forklifts.
- Rated capacities shown are with machine on firm level ground, steered straight with frame level and on properly inflated tires
- Read boom angle and boom extension, then determine allowable load from chart.
- Do not exceed rated loads as dangerous and unstable machine conditions will result.
- Always travel with boom retracted in the lowest possible position.