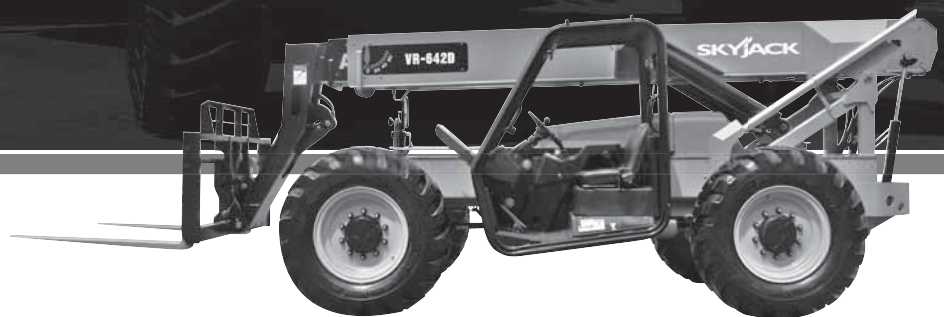




VR642D TELEHANDLER



Skyjack's VR642D offers higher reach, greater capacity, and improved visibility, all to boost your jobsite productivity. With a maximum capacity of 6,700 lbs. (3,039 kg) and a lift height of 42' (12.80 m) the VR642D offers the same industry leading rugged, robust, and reliable design features that Skyjack is famous for. Ideal for residential construction trades, the VR642D features a boom design and machine construction that offers unsurpassed jobsite capabilities.

SKYJACK[™]

VR642D TELEHANDLER

6,700 lbs (3,039 kg) capacity, 42' (12.80 m) maximum lift height

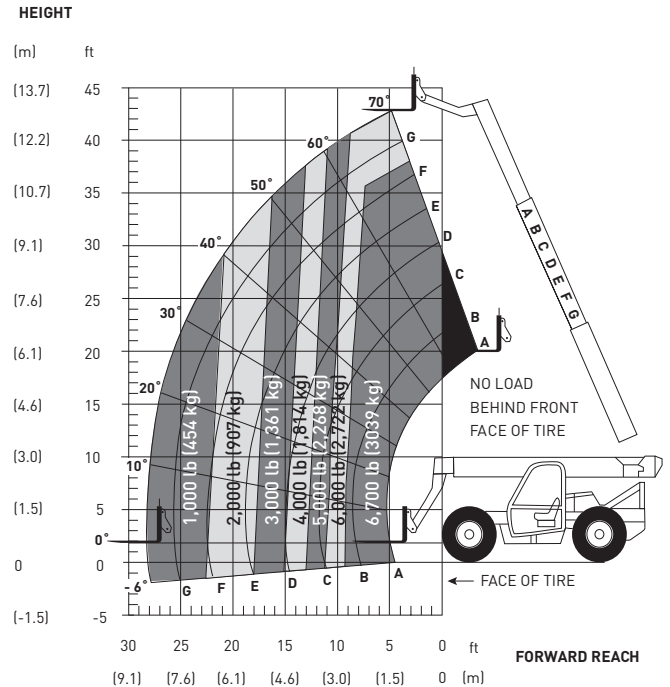
DIMENSIONS

Wheelbase.....	10'	3.05 m
Overall Width.....	8'6"	2.59 m
Overall Height (stowed)	7'11"	2.41 m
Overall Length (less forks)	20'3"	6.17 m
Ground Clearance	16"	41 cm
Operating Weight	19,677 lb	8,944 kg
Turning Radius (outside).....	11'11"	3.64 m
Frame Leveling (degrees).....	+/- 11	

SPECIFICATIONS

Engine	Cummins Tier 3 QSB3.3 Turbocharged Diesel,
HP @ rpm	110 horsepower @ 2400 rpm
Transmission.....	Dana powershift, 3 speeds forward and reverse
Top Speed.....	18 mph (29 km/h)
Axles.....	Dana steerable outboard planetary
Brakes.....	Service - 4 wheel wet disc Parking - SAHR on rear axle
Tire	13 x 24 14PR grip lug
Steering.....	3 mode (2 wheel, 4 wheel, crab)
Boom.....	Maximum lift height - 42'0" (12.8 m) Maximum forward reach 26'4" (8.02 m) Carriage rollback - 23 degrees (boom lowered) Carriage forward tilt - 90 degrees (boom elevated)
General.....	Fuel tank capacity - 35 US gal. (133L) Hydraulic tank capacity - 40 US gal. (151L) 12 volt - 60 amp. alternator

CAPACITY CHART



STANDARD EQUIPMENT

- Standard quick attach carriage mount system
- Dual lift cylinders with cushioning effect
- See through open "A" frame high pivot boom mount design
- ROPS/FOPS certified cab with see through FOPS guard
- Rear window w/wiper
- Side window
- Adjustable vinyl seat with seat belt
- Ergonomic joystick console with armrest and cup holder
- Single multifunction pilot operated joystick control
- Instrumentation: hourmeter and fuel gauge, indicator lights for transmission oil temperature, battery condition, engine coolant pressure and engine oil pressure
- Park brake test button
- 12V DC electrical system with 12V power outlet in cab
- Lockable in cab storage box
- Mid-mount in line engine design
- Lockable sliding engine cover allows access with boom fully stowed
- Engine grid heater
- Dual element air cleaner with flow restriction indicator
- 40 (151L) gallon steel hydraulic tank with lockable cap
- 35 (133L) gallon steel fuel tank with lockable cap
- Horn and backup alarm
- Mirrors, right and left side
- Remote grease fittings for axle trunnion mount lubrication
- Easy to remove steel component and access covers
- Operator/Maintenance and Parts manuals
- 12 months/2000 hour warranty (4 years on structure)

OPTIONAL EQUIPMENT

- Single Auxiliary Hydraulics
- Stabilizers
- Road Lighting Package (includes 1 headlight, 2 front and 1 rear work lights, boom lights, and turn signals)
- Work and Boom Lighting Package (includes 2 front and 1 rear work lights, and 2 boom lights)
- Rotating Beacon
- All Weather Cab (w/wipers, heater & defroster, fan, tinted glass, sliding side window and suspension seat)
- Cab Air Conditioning
- Open Operator Station Upgrade (w/vandal cover and full suspension seat)
- Vandal Protection
- Block Heater
- Hydraulic Test Ports
- Four Wheel Fender Set
- Foam Filled Rough Terrain Tires
- Hard Surface Tread Tires
- Foam Filled Hard Surface Tread Tires
- Solid Rubber Tires

ATTACHMENTS

- Various Carriage/Fork Sizes
- 72 in. Swing Carriage
- 2' High Capacity Jib Boom
- 12' Truss Boom
- 1.75 yd³ 95 in. wide Bucket
- DryWall Handler (used in conjunction with most carriage and pallet fork configurations)
- Scrap Grapple Bucket*

*Requires auxiliary hydraulic package

Note: Materials and specifications are subject to change without notice.

Skyjack Head Office

55 Campbell Rd. Guelph, ON Canada N1H 1B9
Sales Inquiries: 1-877-755-4387 (1-877-SJLIFTS)
Main Switchboard: 1-800-265-2738
Phone: 519-837-0888
Fax: 519-837-8104
Email: skyjack@skyjack.com

www.skyjack.com

IMPORTANT

- Machine design complies with ANSI/ITSDF B56.6-2005 stability requirements for rough terrain forklifts.
- Rated capacities shown are with machine on firm level ground, steered straight with frame level and on properly inflated tires
- Read boom angle and boom extension, then determine allowable load from chart.
- Do not exceed rated loads as dangerous and unstable machine conditions will result.
- Always travel with boom retracted in the lowest possible position.

SKYJACK™