



## Heavy Duty Pallet Trucks

Capacity 6000 and 8000 lbs.

EW 27/36 and EWR 27/36

SERIES 1101

## Linde Material Handling



*Linde*

### Design:

Maximum operator comfort and productivity are major design criteria for this series. A large, fully cushioned platform combined with uncompromisingly rugged structural design, makes these the most reliable trucks in the market. User friendly touch surface and fiberglass reinforced polyurethane ensure that all contact areas are comfortable for the operator.

### Frame:

The series features all seam welded unitized construction. Plate steel, contoured to shape, for rigid strength, provides maximum durability and protection for all vital truck components. Frame and forks are joined by heavy duty "L" brackets, welded into a rigid unit. The battery compartment is an integral part of the chassis and fork assembly, adding even more strength to the frame.

### Forks:

Trucks are available for single and double pallet transport. Fork lengths for triple pallet applications are available on special request. Formed, as well as channel material, are used to optimize strength and rigidity. All forks feature wide skid bars, sloped toes, and pallet entry rollers for superior performance.

### Fork Linkage:

High tensile strength, 1" thick, solid steel tie bars are the main component of the lifting system. These bars connect load-wheel and lifting brackets, lasting for the life of the truck without adjustment. Load-wheel shackles resting in a 7" wide bearing block are able to withstand impacts caused by rough surfaces, for maximum performance and durability.

### Drive Motor:

All EW/EWR trucks feature a 24 volt, high power, AC drive motor. This high performance motor allows for maximum productivity and excellent reliability. Extended maintenance intervals for motor and complete drive system are a direct result of new AC technology.

### Operator Controls:

The top mounted operator control handle is made of heavy-duty die cast aluminum. Soft touch accelerator twist grips govern travel direction and speed and turn back to neutral automatically once released. All controls can be operated by using one hand. On EWR units, a second set of hydraulic controls are located in the operator grab bar.

## Standard and optional equipment

### Standard Equipment

- Programmable, microprocessor-based, Curtis travel control
- AC drive -motor and control system
- Cushion drive tire, EW/EWR 27
- Poly drive tire, EW/EWR 36
- Poly load wheels
- Heavy duty stability casters (EWR)
- Forks 27" x 48"
- Multi-function display
- SB 175 red battery connector
- Nickel-plated 7/8" linkage pins
- Heavy-duty, 1" thick solid steel tie bars

### Optional Equipment

- Various fork length up to 144"
- Package guard load backrest
- Battery compartment rollers
- Storage tray
- Shrink wrap holder
- Travel alarm
- Easy pick system, with electronic coasting feature
- Keyless on/off switch
- "EE" Rating
- Cold storage equipment

Other options available on request



# Technical data

June 2012

Characteristics	1.1	Manufacturer				Linde	Linde
	1.2	Model designation				EW 27 / 36	EWR 27 / 36
	1.3	Power unit				Electric	
	1.4	Operation				Walk	Walk / Ride
	1.5	Load capacity		lb.	(kg)	6000 / 8000 (2700 / 3600)	
	1.6	Load center	Q	in.	(mm)	Varies	
	1.9	Wheelbase	c	in.	(mm)	See chart	
	2.1	Weight (min - battery)	y	lb.	(kg)	1940 (881)	2090 (950)
Wheels & Tires	3.1	Tires (compound) drive / load				Cushion / Poly	Cushion / Poly
	3.2	Tire size front (drive)		in.	(mm)	10 x 5 (245 x 127)	10 x 5 (245 x 127)
	3.3	Tire size rear (load)		in.	(mm)	3.25 x 6.325 (83 x 162)	3.25 x 6.325 (83 x 162)
	3.4	Caster wheel dimension				NA	3.94 x 2.2 (100 x 55)
	3.5	Wheels, number front (drive)				1	1
	3.5.1	Wheels, number rear (load)				2	2
Dimensions	4.19	Overall length	l1	in.	(mm)	See chart	
	4.20	Head length	l2	in.	(mm)	See chart	
	4.21	Overall width	b1	in.	(mm)	34.3 (872) *1	36 (915)
	4.22	Fork dimensions	s/e/l	in.	(mm)	See chart	
	4.33	Aisle width (48" forks)	Ast	in.	(mm)	92.2 (2342)	99.5 (2527)
	4.34	Aisle width	Ast	in.	(mm)	TR - LW + load + clearance *6	
	4.35	Outer turning radius	TR	in.	(mm)	See chart	
	4.4	Lift	h3	in.	(mm)	5.5 (94)	5.5 (94)
	4.4.1	Lift from floor		in.	(mm)	9.2 (234)	9.2 (234)
	4.7	Platform height	h7	in.	(mm)	NA	8.4 (214)
	4.9	Height of tiller arm	h14	in.	(mm)	59.8 (1519) *2	
Performance.	5.1	Travel speed laden		mph	(kph)	3.5 (5.6)	8 (12.8) / 6 (9.6)
	5.1.1	Travel speed empty		mph	(kph)	3.5 (5.6)	9.5 (15.2)
	5.8	Maximum gradeability laden		%		9 / 5	5 / 5
	5.8.1	Maximum gradeability empty		%		15 *3	15 *3
	5.9	Acceleration time laden		s		6.7 / 7.7 *4	6.7 / 7.7 *4
	5.9.1	Acceleration time empty		s		4.6 *4	4.6 *4
	5.10	Service brake				Mechanical	
Drive	6.1	Drive motor		hp	(kw)	4.8 (3.6)	4.8 (3.6)
	6.2	Lift motor		hp	(kw)	2.95 (2.2)	2.95 (2.2)
	6.3	Battery Compartment dimensions		in.		31.5 x 13.5 *5	
	6.4	Battery voltage		volt		24	
	6.5	Battery weight (min - max)		lb.	(kg)	900 / 1500 (400 x 682)	
	8.1	Travel control				Curtis AC	Curtis AC

\*1 37.9 (963) with optional caster wheels

\*2 See line drawing for details

\*3 Confirm ramp angles for clearance

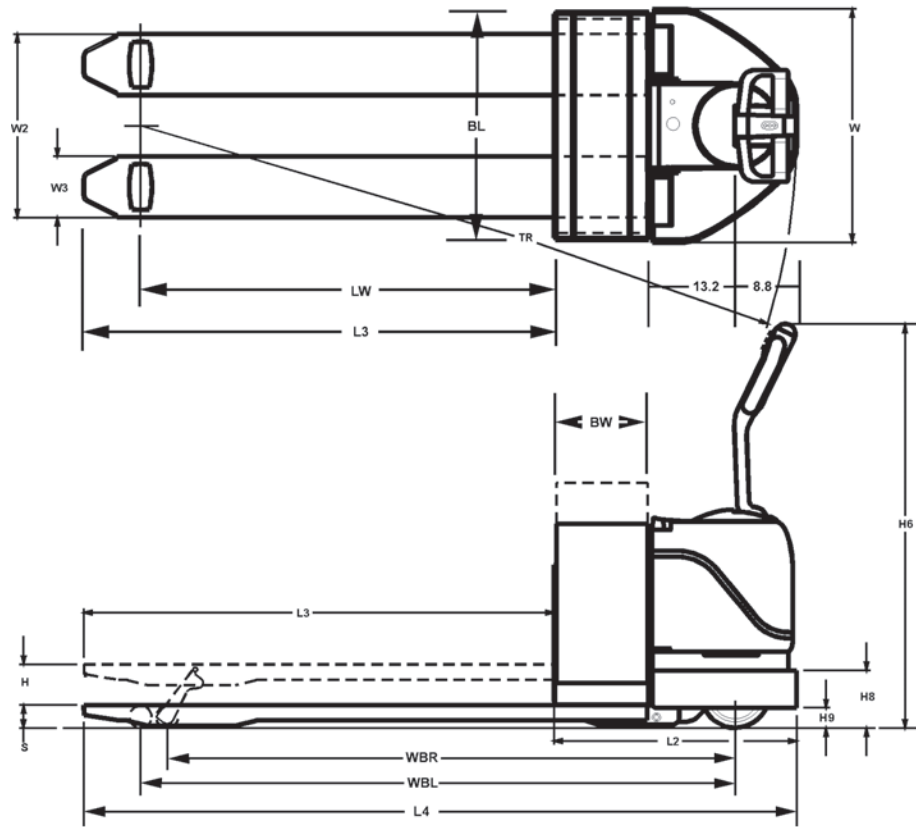
\*4 Time from Zero to top speed

\*5 Open top compartment

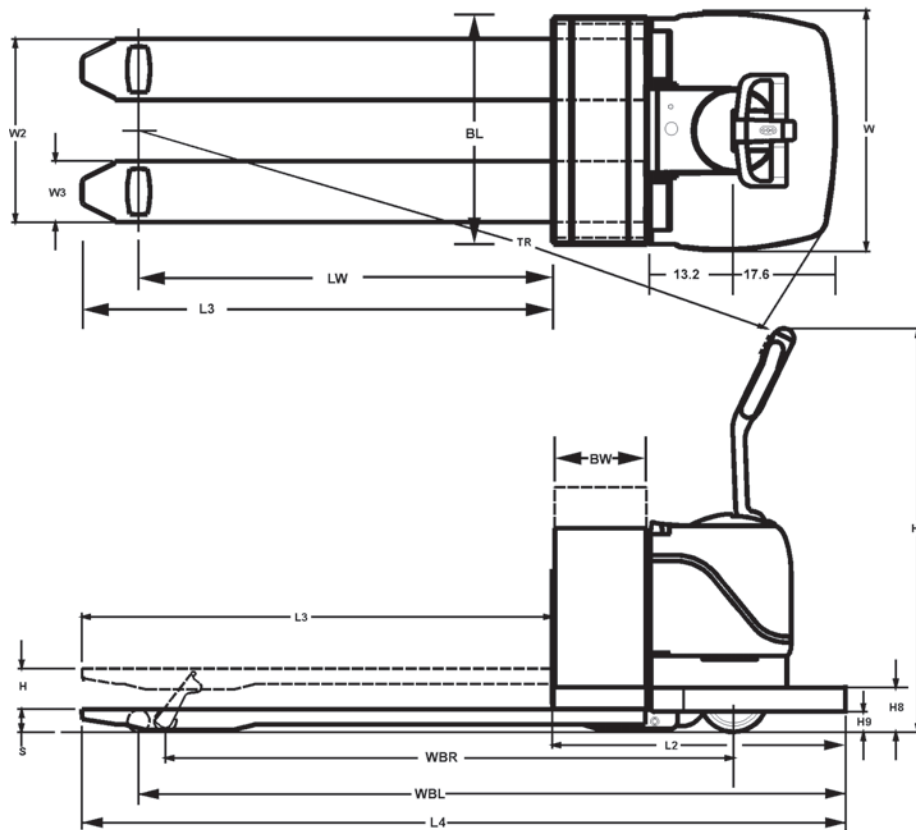
\*6 Operating clearance 8"



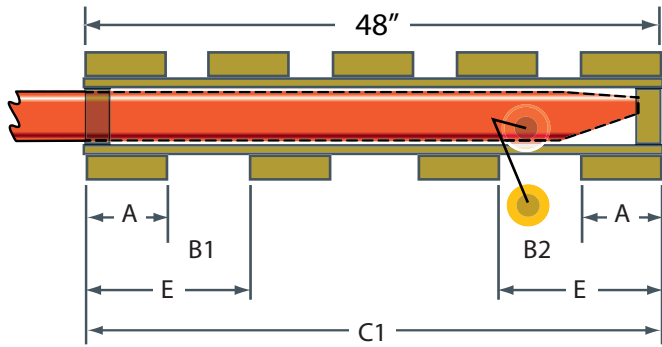
# EW 27/36 - 24 volts



# EWR 27/36 - 24 volts



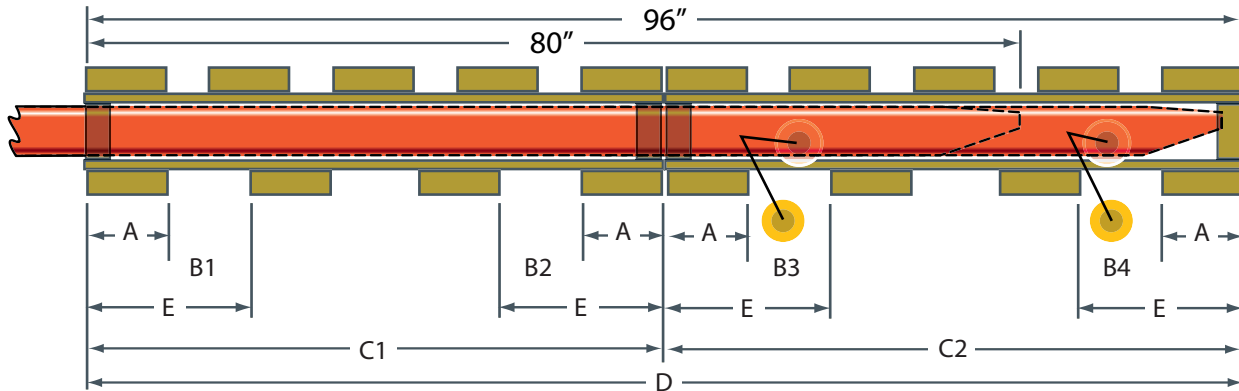
# Pallet load wheel location chart



Pallet truck forks are normally the same length as a pallet. In **one-pallet applications**, the load wheels always function in the second pallet opening (see B2).

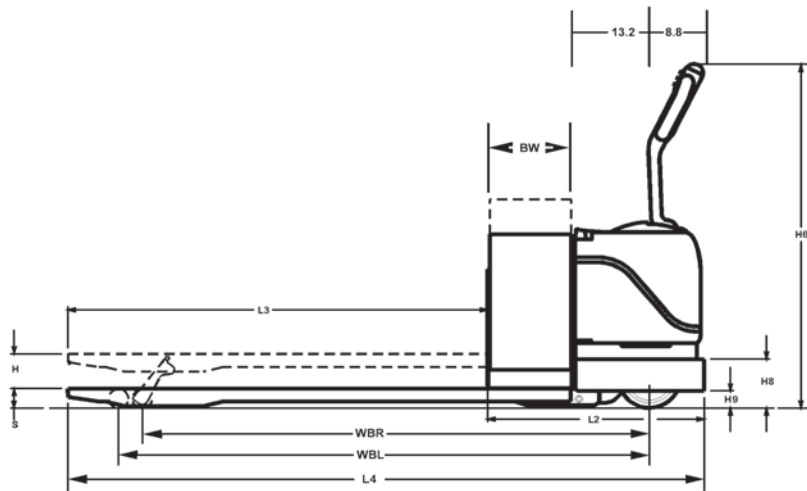
When handling **two pallets**, the load wheels may operate in the first opening of the second pallet (see B3) or in the second pallet opening (see B4).

When "**C1**" and "**C2**" dimensions or "**D**" dimensions equal the fork length, "**E**" is 14.5 in/368.8 mm minimum and "**A**" is 6 in/152 mm maximum.

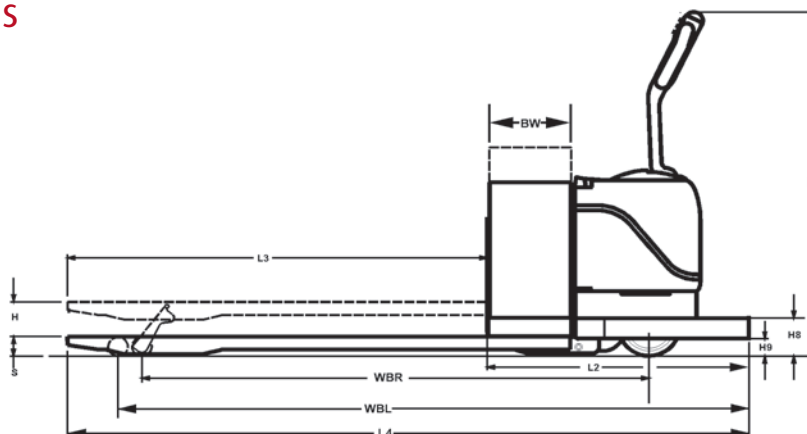


A = Bottom board    B = Pallet opening    C1 = First pallet    C2 = Second pallet    D = Two pallets    E = Bottom board plus pallet opening

## EW 27/36 - 24 volts



## EWR 27/36 - 24 volts



# Sizing Charts\*

All dimensions are based on a 13" battery compartment

		EW / EWR 27				EW / EWR 36							
<b>Voltage</b>		24 V				24 V							
<b>LW</b> Load Wheel		28.5	34.5	40.5	52.5	28.5	34.5	40.5	52.5	61.0	61.0	88.5	109.0
<b>L2</b> Head Length	<b>EW</b>	36.1				37.3							
	<b>EWR</b>	44.5				45.6							
<b>L3</b> Fork Length		36	42	48	60	36	42	48	60	84	96	96	144
<b>W2</b> Outside Fork Spread		27				27				28			
<b>W3</b> Fork Width		9				9				10			
<b>L4</b> Overall Length	<b>EW</b>	72.1	78.1	84.1	96.1	73.3	79.3	85.3	97.3	121.3	133.3	133.3	181.3
	<b>EWR</b>	80.5	86.5	92.5	104.5	81.6	87.6	93.6	105.6	129.6	129.6	142.6	189.6
<b>WB</b> Wheel Base	<b>Raised</b>	51.6	57.6	63.6	75.6	52.8	58.8	64.8	76.8	85.3	85.3	112.8	133.3
	<b>Lowered</b>	55.4	61.4	76.7	88.7	56.6	62.6	68.6	80.6	89.1	89.1	116.6	137.1
<b>TR</b> Turn Radius	<b>EW Lowered</b>	64.7	70.7	76.7	88.7	65.9	71.9	77.9	89.9	98.4	98.4	125.9	146.4
	<b>EWR Lowered</b>	73.0	79.0	84.0	97.0	73.0	80.1	85.3	98.1	106.6	106.6	134.0	154.6

EW 27/36 - 24 Volts: standard with 10" forks and 23" or 28" outside fork spread.

Wheelbase and Turning Radius on truck with 84 in/2,134 mm and 96 in/2,438 mm forks are indicated with load wheels located in the first opening of the second pallet. (See B3 on pallet load wheel location chart).

# Features

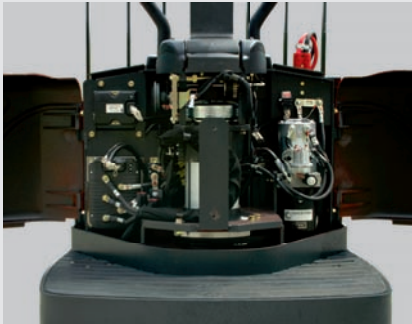


## Trucks

- generous platform area (EWR)
- soft floor mat (EWR)
- super tough chassis

## Motor Compartment

- well organized
- easy access
- low maintenance



## Tiller Handle

- cast aluminum
- delta shaped
- twist grip controls



## Chassis & Forks

- seam welded plate steel chassis
- formed forks to 6000 Lb
- channel forks to 8000 Lb



## AC Drive Motor

- powerful and smooth running
- 3.6 kW output (4.8 hp)
- best acceleration

## Motor Covers

- glass filled polyurethane
- "gentle to touch" surface
- no corrosion
- impact resistant

## Massive Lift Linkage

- solid steel 1" tie bars
- 7" shackle bearing block
- fully greasable
- minimal maintenance

Linde Material Handling North America Corporation  
2450 West 5th North Street, Summerville, SC 29483  
Phone: (843) 875.8000 • Truck Sales Fax: (843) 875.8471  
E-mail: trucksales@lmh-na.com • Web Site: www.lmh-na.com

Linde Material Handling

*Linde*

ANSI: Standard truck meets all applicable mandatory requirements of ANSI /ISO/FB56.1 standards for powered industrial trucks.  
NOTE: Performance data may vary due to motor and system efficiency tolerances. The performance depicted represents nominal values obtained under typical operating conditions. All metric dimensions are in millimeters unless otherwise specified. All metric dimensions are not direct equivalents due to rounding data. The descriptions and specifications included on this data sheet were in effect at the time of printing. Linde Material Handling North America Corporation reserves the right to make improvements and changes in specification or design without notice and without incurring obligation. Please check with your authorized Linde dealer for information on possible updates or revisions.

linde\_spec\_1101\_0612  
USA\_V12.1