

# Features

## Original Linde hydrostatic drive

- Responsive, smooth and precise driving
- No differential, no service brakes, no mechanical transmission parts
- Low maintenance cost, long service life



## Linde ProtectorFrame

- Safe and robust chassis
- Incorporated access areas
- Unparalleled operator protection

## Linde dual travel control

- Quick directional changes
- Short pedal stroke
- Increased productivity
- Limited operator fatigue

## Linde Load Control (LLC)

- Accurate, safe load handling
- Effortless control of all hydraulic functions
- Traction and hydraulics operate completely independent from each other

## High-efficiency engine

- Low exhaust emissions
- Low fuel consumption
- Most up-to-date engine monitoring and operating technology
- 10.5 G capacity fuel tank (diesel)



## Operator compartment

- Designed to stringent ergonomic standards
- Spacious cab with generous leg room
- Outstanding all-around visibility

## Linde Truck Control (LTC)

- Highly reliable electronics
- Outstanding dependability due to dual monitoring systems
- Easily adjustable performance parameters

## Linde clear-view mast

- Superb visibility
- Exceptional residual capacity
- Electronic limiting of tilt angle

Linde Material Handling North America Corporation  
 2450 West 5th North Street, Summerville, SC 29483  
 Phone: (843) 875.8000 • Truck Sales Fax: (843) 875.8471  
 E-mail: trucksales@lmh-na.com • Web Site: www.lmh-na.com



ANSI Standard truck meets all applicable mandatory requirements of ANSI/TSD 56.1 standards for powered industrial trucks.  
 NOTE: Performance data may vary due to motor and system efficiency tolerances. The performance depicted represents nominal values obtained under typical operating conditions. Metric dimensions are in millimeters unless otherwise specified.  
 All metric dimensions are not direct equivalents due to rounding data. The descriptions and specifications included on this data sheet were in effect at the time of printing. Linde Material Handling North America Corporation reserves the right to make improvements and changes in specification or design without notice and without incurring obligation. Please check with your authorized Linde dealer for information on possible updates or revisions.

linde\_spec\_393-02\_EVO (0213)  
 USA\_V13.2 (031513)



**Diesel and LPG Forklift Trucks**  
 5500, 6000 and 7000 lb. Capacity  
 H25D/T 600 EVO, H30D/T EVO, and H35D/T EVO  
 SERIES 393-02

## Safety

This truck features the exclusive Linde ProtectorFrame overhead guard and frame system that offers unparalleled protection for the driver. The top mounted tilt cylinders allow for a mast design which maximizes all-around visibility, while optimizing truck stability.

## Performance

Advanced engine and drive technology combined with the original Linde Load Control system enable the operator to utilize the truck's vast potential for greatest possible productivity. The exclusive Linde dual pedal travel control allows smooth directional changes and precise maneuvering, even in the tightest areas.

## Comfort

A comfortable operator is a productive and safe operator. That's why the 393-02 series is designed to the latest ergonomic standards. A multitude of features such as the armrest, full suspension seat, ample foot room, and an adjustable steering column, are all part of a comprehensive effort to keep the operator comfortable and secure.

## Low Maintenance & Outstanding Durability

Exclusive features like Linde hydrostatic drive, neoprene mounting of axles, and mast & tilt cylinders, all contribute extensively to low maintenance. The longest maintenance intervals in the industry are just one result of applied know-how and engineering. Even in the harshest applications this truck series offers a proven combination of reliability and durability resulting in long service life.

Linde Material Handling



# Standard and optional equipment

## Standard equipment:

Linde dual pedal travel control	Load backrest (LBR)
Linde Load Control (LLC)	Comprehensive, anti-glare display
High comfort, fully adjustable suspension seat	Overhead tilt cylinders
Tilt steering column	Headlights
Low effort power steering	Zero maintenance mast and tilt cylinder mounting
Linde operator protector frame	3-function hydraulic control valve with "finger-tip control" handles and armrest
High-performance hydraulic filters	Ultra sonic fuel level indicator (LP)
3-way regulated catalytic converter (LPG engine)	

## Optional:

Single pedal travel control	Cab/overhead guard protection kits
Simple, dual and triple masts and carriages	Additional lighting
Hang-on sideshifter	BU alarm
Various special fork sizes	Mirrors
Integrated sideshifter	Special packages; recycling, foundry, etc
Additional hydraulic functions	Tire options; twin, radial, pneumatic
Tilt memory	Reduced speed settings
Variety of operator cabs	Linde Engine Protection Systems (LEPS)
Cab heater, defroster	
Air conditioning	Other options available on request

# Capacity\*

## 393-02 Series Model H25D/T 600

1.5" x 4" x 42" Forks\*\*  
SE 27 x 10-12 Drive Tires\*\*

### Mast Increments

h1	h3	h2	
88.3	124.0	0.0	Simple
92.2	132.0	0.0	Simple
98.1	143.7	0.0	Simple
102.0	151.6	0.0	Simple
86.3	122.7	56.1	Dual
90.2	130.5	60.0	Dual
96.1	142.3	65.9	Dual
100.1	150.2	69.9	Dual
86.3	183.3	56.1	Triple
88.3	189.2	58.1	Triple
90.2	195.1	60.0	Triple
96.1	210.9	65.9	Triple

### Capacity (lb) @ 24" Load Center\*\*

Std. Carriage*	Integral SS Carriage*	Hang-on SS Carriage*
5500	5500	5100
5500	5500	5100
5500	5500	5100
5500	5500	5100
5500	5500	5100
5500	5500	5100
5500	5500	5100
5500	5500	5100
5500	5500	5100
5500	5500	5100
5500	5500	5100
5500	4925	5100

## 393-02 Series Model H30D/T

1.75" x 4" x 42" Forks\*\*  
SE 27 x 10-12 Drive Tires\*\*

### Mast Increments

h1	h3	h2	
88.3	124.0	0.0	Simple
92.2	132.0	0.0	Simple
98.1	143.7	0.0	Simple
102.0	151.6	0.0	Simple
86.3	122.7	56.1	Dual
90.2	130.5	60.0	Dual
96.1	142.3	65.9	Dual
100.1	150.2	69.9	Dual
86.3	183.3	56.1	Triple
88.3	189.2	58.1	Triple
90.2	195.1	60.0	Triple
96.1	210.9	65.9	Triple

### Capacity (lb) @ 24" Load Center\*\*

Std. Carriage*	Integral SS Carriage*	Hang-on SS Carriage*
6000	6000	5605
6000	6000	5605
6000	6000	5605
6000	6000	5605
6000	6000	5605
6000	6000	5605
6000	6000	5605
6000	6000	5605
6000	6000	5605
6000	6000	5605
6000	5845	5605
6000	5055	5055

## 393-02 Series Model H35D/T

1.75" x 5" x 42" Forks\*\*  
SE 27 x 10-12 Drive Tires\*\*

### Mast Increments

h1	h3	h2	
88.3	124.0	0.0	Simple
92.2	132.0	0.0	Simple
98.1	143.7	0.0	Simple
102.0	151.6	0.0	Simple
86.3	122.7	56.1	Dual
90.2	130.5	60.0	Dual
96.1	142.3	65.9	Dual
100.1	150.2	69.9	Dual
86.3	183.3	56.1	Triple
88.3	189.2	58.1	Triple
90.2	195.1	60.0	Triple
96.1	210.9	65.9	Triple

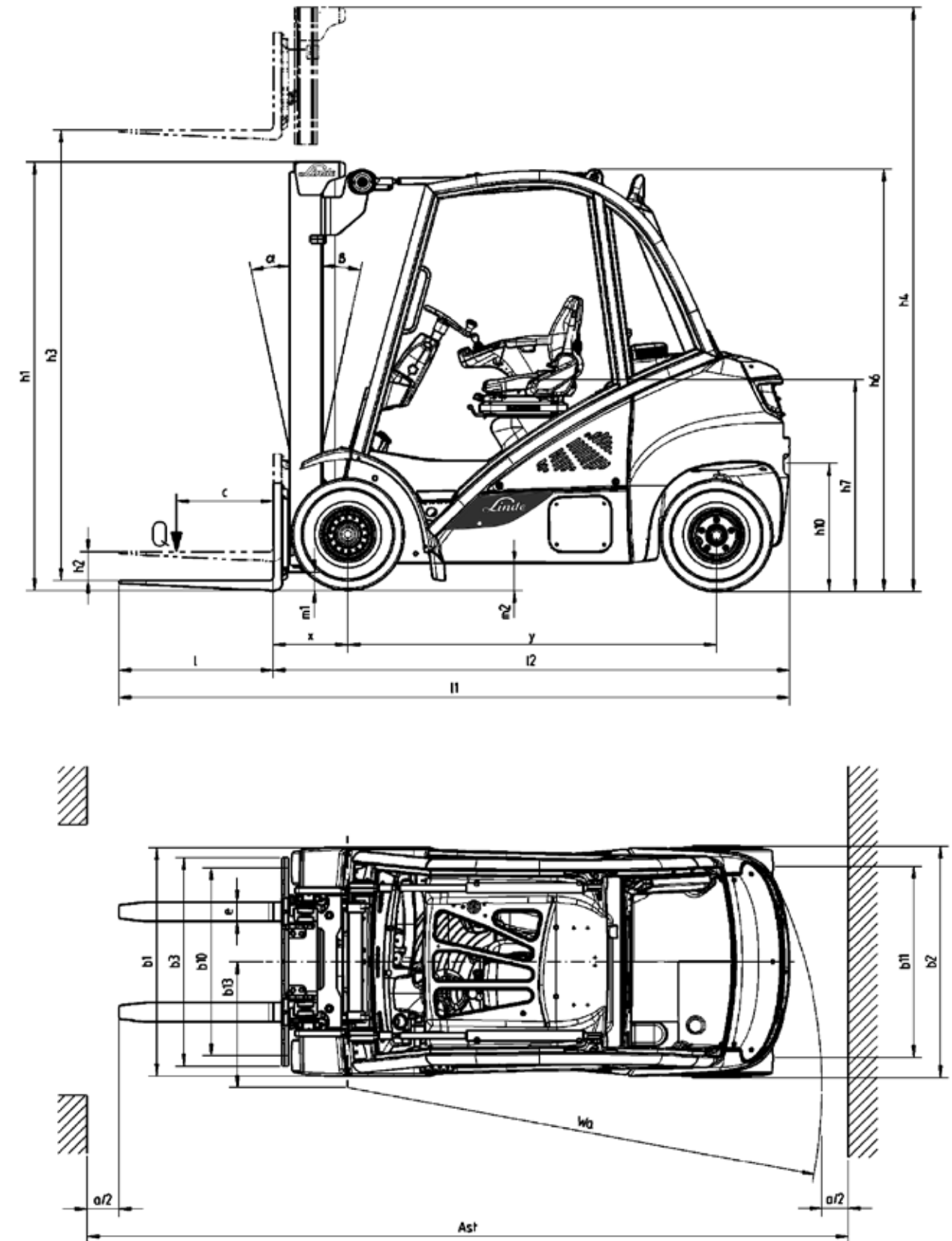
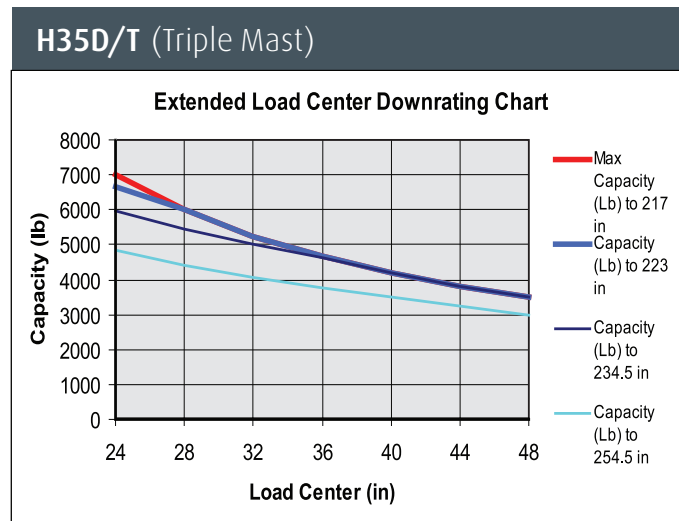
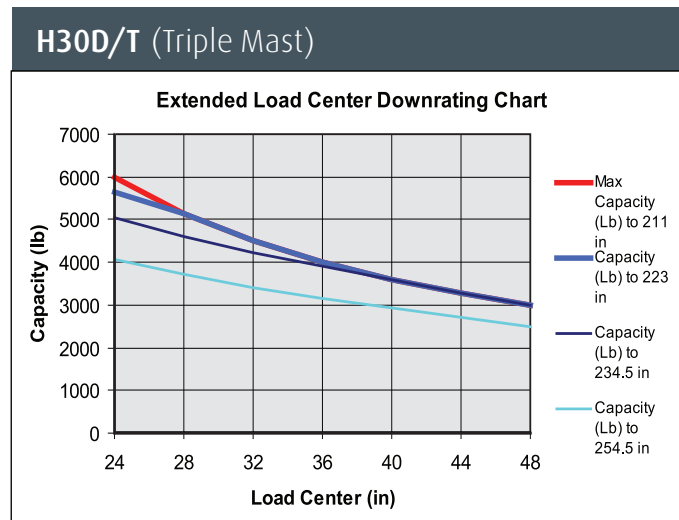
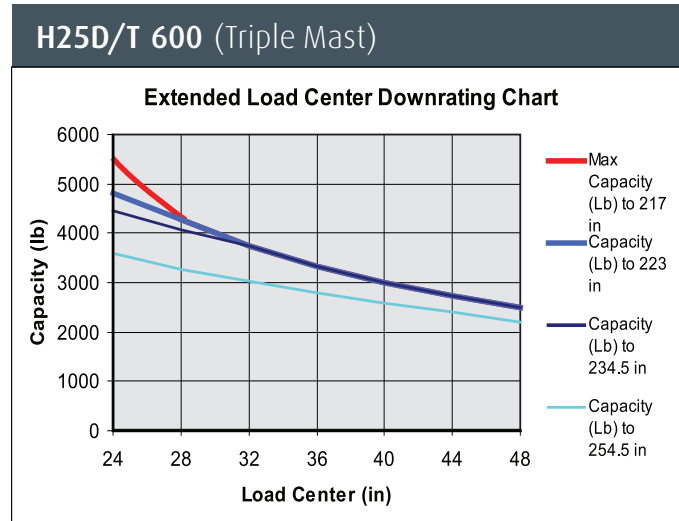
### Capacity (lb) @ 24" Load Center\*\*

Std. Carriage*	Integral SS Carriage*	Hang-on SS Carriage*
7000	7000	6500
7000	7000	6500
7000	7000	6500
7000	7000	6500
7000	7000	6500
7000	7000	6500
7000	7000	6500
7000	7000	6500
7000	7000	6500
7000	7000	6500
7000	7000	6500
7000	6760	6500
7000	6000	6000



# Downrating Charts\*

Reference SE tires with standard carriage and forks only.



\* For quick reference only, contact factory for detailed ratings.  
 \*\* Capacity ratings can be affected by changing forks, load center, and/or drive tires.

# Technical Data

February 2013

## SERIES 393-02

## SERIES 393-02 (H25 D/T, H30D/T, H35D/T)

		Linde		Linde		Linde				
		H25D 600	H25T 600	H30D	H30T	H35D	H35T			
Characteristics	1.1	Manufacturer	Linde		Linde		Linde		1.1	
	1.2	Model designation	H25D 600	H25T 600	H30D	H30T	H35D	H35T	1.2	
	1.3	Power unit: battery, diesel, gasoline, LP gas, AC	Diesel	LPG	Diesel	LPG	Diesel	LPG	1.3	
	1.4	Operation: manual, pedestrian, rider standing, rider seated, order picker	Seated		Seated		Seated		1.4	
	1.5	Load capacity	Q (lb)	5500	5500	6000	6000	7000	7000	1.5
	1.6	Load center	c (in)	24	24	24	24	24	24	1.6
	1.8	Load distance (center of drive axle to fork face)	x (in)	17.5	17.5	17.5	17.5	17.7	17.7	1.8
	1.9	Wheelbase	(in)	74.9	74.9	75.9	75.9	77.4	77.4	1.9
	Weight	2.1	Service weight	(lb)	8531	8487	9303	9259	10317	10284
2.2		Axle loading with load, front/rear	(lb)	12500 / 1543	12412 / 1587	14153 / 1763	14065 / 1807	15961 / 2072	15884 / 2116	2.2
2.3		Axle loading without load, front/rear	(lb)	4254 / 4276	4166 / 4321	4299 / 5004	4210 / 5048	4519 / 5798	4442 / 5842	2.3
Wheels & Tires	3.1	Tire type - front/rear: SE (cushion super elastic)	SE <sup>1</sup>		SE <sup>1</sup>		SE <sup>1</sup>		3.1	
	3.2	Tire size: front	(in)	27 x 10-12	27 x 10-12	27 x 10-12	27 x 10-12	27 x 10-12	3.2	
	3.3	Tire size: rear	(in)	23 x 9-10	23 x 9-10	23 x 9-10	23 x 9-10	23 x 9-10	3.3	
	3.5	Wheels: number front/rear (x = driven)		2 x / 2 <sup>2</sup>	2 x / 2 <sup>2</sup>	2 x / 2 <sup>2</sup>	2 x / 2 <sup>2</sup>	2 x / 2 <sup>2</sup>	3.5	
	3.6	Track width, front	b10 (in)	39.7 <sup>3</sup>	39.7 <sup>3</sup>	39.7 <sup>3</sup>	39.7 <sup>3</sup>	39.7 <sup>3</sup>	39.7 <sup>3</sup>	3.6
	3.7	Track width, rear	b11 (in)	36.7	36.7	36.7	36.7	36.7	36.7	3.7
	Dimensions	4.1	Mast/fork carriage tilt: forward/back	degrees (°)	5.0 / 8.0 <sup>4</sup>	5.0 / 8.0 <sup>4</sup>	5.0 / 8.0 <sup>4</sup>	5.0 / 8.0 <sup>4</sup>	5.0 / 8.0 <sup>4</sup>	5.0 / 8.0 <sup>4</sup>
4.2		Height of mast lowered	h1 (in)	See mast table		See mast table		See mast table		4.2
4.3		Free lift	h2 (in)	See mast table		See mast table		See mast table		4.3
4.4		Lift	h3 (in)	See mast table		See mast table		See mast table		4.4
4.5		Height of mast extended (includes LBR)	h4 (in)	h3 + 48"		h3 + 48"		h3 + 48"		4.5
4.7		Height of overhead guard/cab (Add 2.0" for top wiper)	h6 (in)	87 <sup>5</sup>	87 <sup>5</sup>	87 <sup>5</sup>	87 <sup>5</sup>	87 <sup>5</sup>	87 <sup>5</sup>	4.7
4.8		Height of seat	h7 (in)	43.5	43.5	43.5	43.5	43.5	43.5	4.8
4.12		Height of tow coupling	h10 (in)	27.5	27.5	27.5	27.5	27.5	27.5	4.12
4.19		Overall length with 42" forks	l1 (in)	149.4	149.4	150.4	150.4	152	152	4.19
4.20		Length to fork face	l2 (in)	107.4	107.4	108.4	108.4	110	110	4.20
4.21		Overall width, front/rear	b1/b2 (in)	49.5 <sup>6</sup> / 49.5	49.5 <sup>6</sup> / 49.5	49.5 <sup>6</sup> / 49.5	49.5 <sup>6</sup> / 49.5	49.5 <sup>6</sup> / 49.5	49.5 <sup>6</sup> / 49.5	4.21
4.22		Fork dimensions	s/e/l (in)	1.75 / 4 / 42	1.75 / 4 / 42	1.75 / 4 / 42	1.75 / 4 / 42	1.75 / 4 / 42	1.75 / 4 / 42	4.22
4.23		Fork carriage: class		Class 2	Class 2	Class 3	Class 3	Class 3	Class 3	4.23
4.24		Width of fork carriage	b3 (in)	45.3 <sup>7</sup>	45.3 <sup>7</sup>	45.3 <sup>7</sup>	45.3 <sup>7</sup>	45.3 <sup>7</sup>	45.3 <sup>7</sup>	4.24
4.31		Ground clearance under mast, with load	m1 (in)	4.7	4.7	4.7	4.7	4.6	4.6	4.31
4.32		Ground clearance, center of wheelbase	m2 (in)	6.8	6.8	6.8	6.8	6.7	6.7	4.32
4.33		Aisle width, with 48" load	Ast (in)	168.7 <sup>8</sup>	168.7 <sup>8</sup>	169.7 <sup>8</sup>	169.7 <sup>8</sup>	171.1 <sup>8</sup>	171.1 <sup>8</sup>	4.33
4.34	Aisle width, with other load lengths		112.7 <sup>10</sup>	112.7 <sup>10</sup>	113.7 <sup>10</sup>	113.7 <sup>10</sup>	115.10 <sup>10</sup>	115.10 <sup>10</sup>	4.34	
4.35	Outer turning radius	Wa (in)	95.3	95.3	96.2	96.2	97.5	97.5	4.35	
Performance	5.1	Travel speed, with/without load	(mph)	13.75 / 13.75	13.75 / 13.75	13.75 / 13.75	13.75 / 13.75	13.75 / 13.75	13.75 / 13.75	5.1
	5.2	Lifting speed, with/without load	(fpm)	92.5 / 94.5	104.3 / 110	104.3 / 110	104.3 / 110	94.5 / 98.5	94.5 / 98.5	5.2
	5.3	Lowering speed, with/without load	(fpm)	106.3 / 102.3	106.3 / 102.3	106.3 / 102.3	106.3 / 102.3	106.3 / 102.3	106.3 / 102.3	5.3
	5.5	Drawbar pull, with/without load	(lbs)	4502 / 3405	4502 / 3405	4448 / 3439	4448 / 3369	4448 / 3617	4448 / 3554	5.5
	5.7	Climbing ability, with/without load	(%)	32 / 33	32 / 33	27 / 30	26 / 30	24 / 28	23 / 28	5.7
	5.9	Acceleration, with/without load	(sec)	5.6 / 4.8 <sup>9</sup>	6.0 / 5.2 <sup>9</sup>	5.6 / 4.8 <sup>9</sup>	6.1 / 5.3 <sup>9</sup>	5.7 / 4.9 <sup>9</sup>	6.1 / 5.3 <sup>9</sup>	5.9
5.10	Service brake		Hydrostatic		Hydrostatic		Hydrostatic		5.10	
Engine	7.1	Engine manufacturer/type		VW / CPYB	VW / BEF	VW / CPYB	VW / BEF	VW / CPYB	VW / BEF	7.1
	7.2	Engine rating	(hp)	59	53	59	53	59	53	7.2
	7.3	Rated speed	(rpm)	2700	2600	2700	2600	2700	2600	7.3
	7.4	Number of cylinders/Engine displacement	(cu inches)	4 / 120	4 / 115.7	4 / 120	4 / 115.7	4 / 120	4 / 115.7	7.4
Other	8.1	Traction control		Hydrostatic		Hydrostatic		Hydrostatic		8.1
	8.2	Working pressure for attachments	(psi)	2465	2465	2465	2465	2465	2465	8.2
	8.3	Oil flow attachments	(gpm)	10.5	10.5	10.5	10.5	10.5	10.5	8.3
	8.4	Noise level at driver's ear	(dB)	77	77	77	77	77	77	8.4

### Footnotes

<sup>1</sup> Optional tires available

<sup>6</sup> 63.4 with twin tires

<sup>2</sup> 4x with twin tires

<sup>7</sup> Wider carriages available

<sup>3</sup> 47.4 with twin tires

<sup>8</sup> Including 48" load or forks, and 8" operational clearance

<sup>4</sup> 5° with triplex mast

<sup>9</sup> 0 mph to maximum speed

<sup>5</sup> Low ohg available

<sup>10</sup> Add load length, add operational clearance