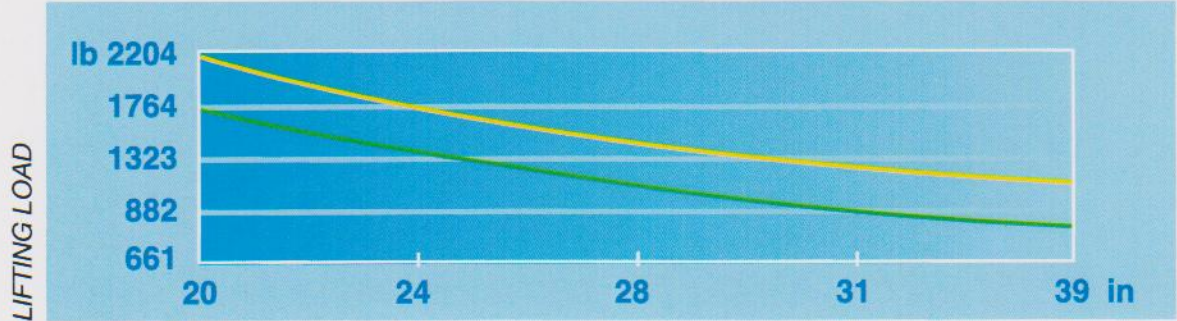


# TIME



**8C-10C AC**

— ME 8C AC — ME 10C AC



DISTANCE

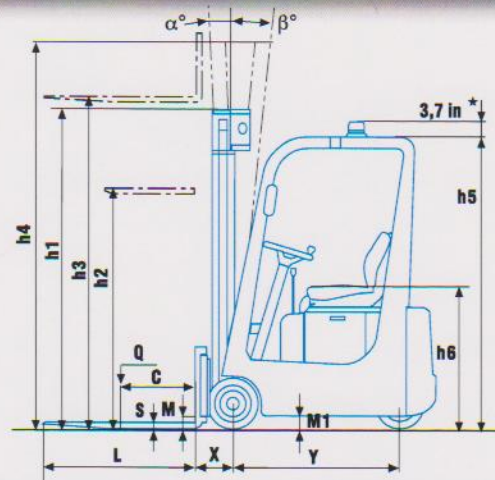
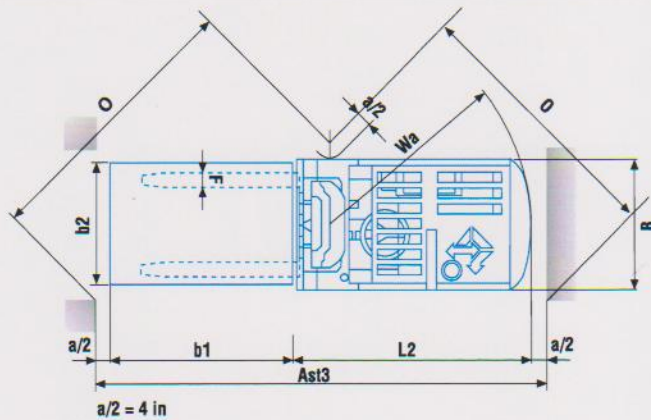
### MAST DETAILS

HEIGHT		STANDARD INCL. SIDE-SHIFT				DUPLEX GAL INCL. SIDE-SHIFT				TRIPLEX GAL INCL. SIDE-SHIFT		
		113	126	149	165	113	126	149	165	169	189	224
Lifting	h3	113	126	149	165	113	126	149	165	169	189	224
Height mast collapsed	h1	75	82	94	102	75	82	94	102	75	82	94
Height mast extended	h4	132	145	169	184	132	145	169	184	188	207	243
Free lift	h2	-	-	-	-	56	63	74	82	56	63	74
Width ME 8C AC	B	31.5	31.5	33.9	33.9	31.5	31.5	33.9	33.9	33.9	33.9	35.5
Width ME 10C AC	B	33.5	35.8	35.8	35.8	33.5	33.5	35.8	35.8	35.8	35.8	37.4





# SERIES ME 8C-10C AC



SPECIFICATION SHEET				ME 8C AC	ME 10C AC
CHARACTERISTICS	1	Manufacturer	Abbreviated form	V.MARIOTTI S.r.l.	V.MARIOTTI S.r.l.
	2	Models	Manufacturer's model	ME 8C AC	ME 10C AC
	3	Capacity	Q Lifting load	1764	2205
	4	At load centre	C Distance	20	20
	5	Type of drive	Electric (Battery) - Diesel - Fuel gas	Electric	Electric
	6	Type of steering	Driver standing - driver sitting - outside	driver sitting	driver sitting
	7	Tyres	V Cushion - SE Superel. front / rear	V/V	V/V
	8	Wheels	Quantity (♦ = driven) front / rear	2 / 1♦	2 / 1♦
DIMENSIONS	9	Lift	h3 Lift	113	113
	10		h2 Normal free lift (see Mast details)	\	\
	11	Forks Fem II	Length(L) x Width(F) x Thickness(S)	31.5X3.1X1.2	31.5X3.1X1.2
	12	Tilt	Of the mast- forward (α) / backward (β)	2° 30' / 6°	2° 30' / 6°
	13		L2 Length at the fork backrest	55.9*	55.9*
	14		B Width	31.5	33.5
	15	Overall dimensions	h1 Height, mast collapsed	75	75
	16		h4 Height, mast extended	131	132
	17		h5 Height overhead guard	74.5	74.5
	18		h6 Height seat from floor	33.5	33.5
19	Turning radius	Wa	47.1#	47.1#	
20	Distance of load	X From centre front axle	8.7*	8.7*	
21	Width of aisle	O (b'xb²) 1200x800 - 1200x1000	71.3/73.6	72 / 74.4	
22		Ast 3 (b'xb²) 1200x800 - 1200x1000	113/114.2	113/114.2	
PERFORMANCES	23	Stability tests	Complying with EEC Directive 98/37/EC	yes/no	yes
	24	Speeds	Driving with /without load	Mph	4.6 / 4.8
	25		Lifting with /without load	fpm	43.2/57
	26		Lowering with /without load	fpm	adjustable
	27	Draw- bar- pull	At the hook max with /without load	lb	315 / 360
	28	Gradeability	with /without load	%	13 / 18
29	Max. with /without load		%	18 / 22	
CHASSIS	30	Weight	Truck, battery included	lb	3285•
	31	Axle load	Without load front / rear	lb	1301 / 1963
	32		With load front / rear	lb	4211 / 833
	33	Wheels	Number front / rear	n°	2 / 1
	34		Dimensions front	in	12x4.7x8
	35		Dimensions rear	in	12x4.7x8
	36	Wheel base	Y min. / max. (variable)	in	36.8 / 40
	37	Wheel track	Wheels centerline front	in	27
	38	Ground clearance	M With load at the lowest point	in	2.8
	39		M1 With load of wheel base	in	3
40	Brakes	Service ( foot ) brake		hydraulic	
41		Hand parking brake		mechanical	
DRIVE	42	Battery	Type		traction
	43		Volt/Ah (capacity at 5 hours' discharge)	V/Ah	24/270 - 24/500
	44		Weight	lb	584• - 882
	45	Power steering	Hydraulic - electronically controlled	yes/no	yes
	46	Electric motors	Hourly output of driving motor	Kw	2.5
	47		Lifting motor, output	Kw	3
	48	Traction Contr.	AC MOSFET	yes/no	yes
	49	Pump control	Electronic by microprocessors	yes/no	yes
	50	Working Press.	For additional attachments	psi	1.667

★ On demand installation of the flashlight inside the height of the overhead guard h5

# with mast in vertical position \* included side-shift Ast 3 =  $Wa + \sqrt{(x + b')^2 + (b^2/2)^2} + a$

Data shown are not binding and are liable to variations. The constructor reserves the right of changes without notice.