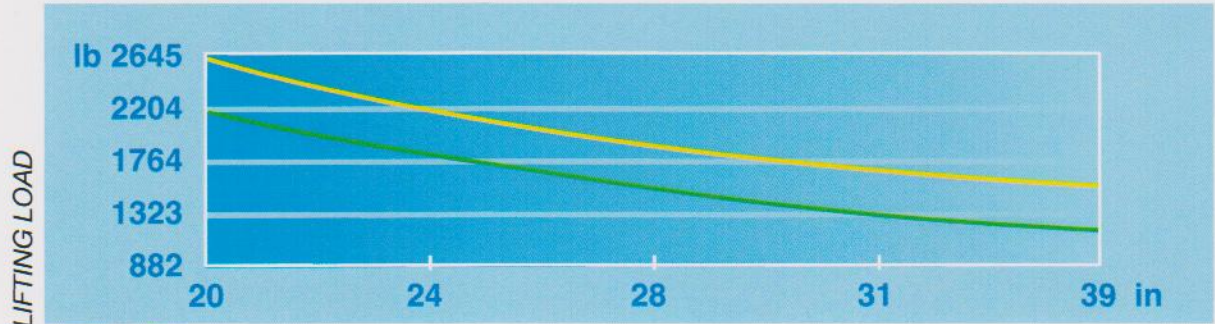


# TIME



**10-12 AC**

— ME 10 AC — ME 12 AC



DISTANCE

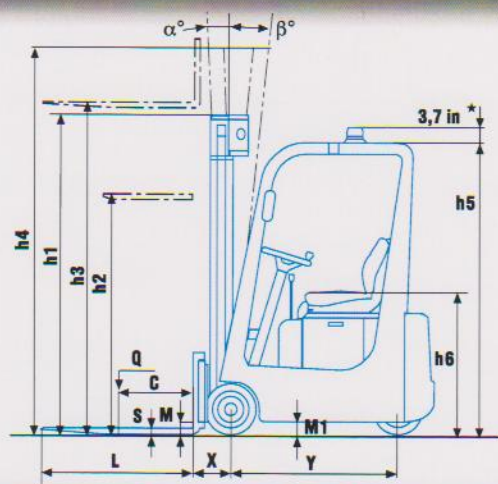
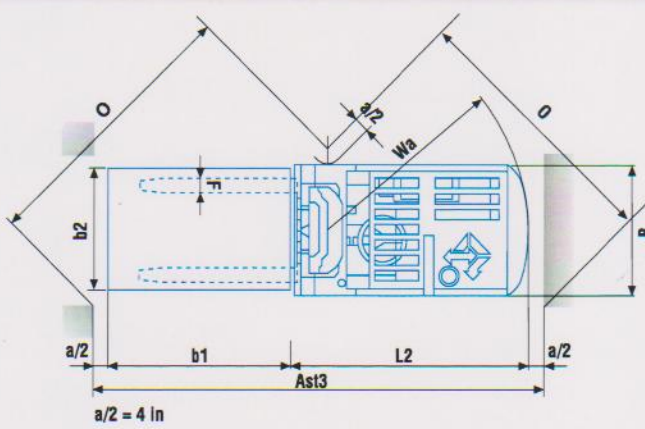
### MAST DETAILS

HEIGHT		STANDARD INCL. SIDE-SHIFT				DUPLEX GAL INCL. SIDE-SHIFT				TRIPLEX GAL INCL. SIDE-SHIFT		
		1	2	3	4	1	2	3	4	1	2	3
Lifting	h3	114	126	150	165	114	126	150	165	171	189	224
Height mast collapsed	h1	76.2	82.3	94.1	102	76.2	82.3	94.1	102	75.4	82.3	94.1
Height mast extended	h4	134.4	146.5	170.1	185.8	134.4	146.5	170.1	185.8	191.7	209.6	245.1
Free lift	h2	-	-	-	-	57.3	63.2	75	82.9	57.3	63.2	75
Width ME 10 AC	B	33.9	33.9	33.9	36.2	33.9	33.9	33.9	36.2	36.2	36.2	37.8
Width ME 12 AC	B	35	35	35	37.4	35	35	35	37.4	37.4	37.4	39



# SERIES ME 10-12 AC

May 2010



SPECIFICATION SHEET				ME 10 AC	ME 12 AC
CHARACTERISTICS	1	Manufacturer	Abbreviated form	V.MARIOTTI S.r.l.	V.MARIOTTI S.r.l.
	2	Models	Manufacturer's model	ME 10 AC	ME 12 AC
	3	Capacity	Q Lifting load	2205	2646
	4	At load centre	C Distance	20	20
	5	Type of drive	Electric (Battery) - Diesel - Fuel gas	electric	electric
	6	Type of steering	Driver standing - driver sitting - outside	driver sitting	driver sitting
	7	Tyres	V Cushion - SE Superel. front / rear	V / V	V / V
	8	Wheels	Quantity (♦ = driven) front / rear	2 / 1♦	2 / 1♦
DIMENSIONS	9	Lift	h3 Lift	126	126
	10		h2 Normal free lift (see Mast details)	\	\
	11	Forks Fem II	Length(L) x Width(F) x Thickness(S)	39.4x3.9x1.4	39.4x3.9x1.4
	12	Tilt	Of the mast- forward (α) / backward (β)	2°30' / 6°	2°30' / 6°
	13		L2 Length at the fork backrest	61.8*	61.8*
	14		B Width	33.9	35
	15	Overall dimensions	h1 Height, mast collapsed	82.3	82.3
	16		h4 Height, mast extended	146.5	146.5
	17		h5 Height overhead guard	76	76
	18		h6 Height seat from floor	36.6	36.6
19	Turning radius	Wa	52.2#	52.2#	
20	Distance of load	X From centre front axle	9.5*	9.5*	
21	Width of aisle	O (b'xb²) 1200x800 - 1200x1000	73 / 75	73 / 75	
22		Ast 3 (b'xb²) 1200x800 - 1200x1000	119 / 120	119 / 120	
WEIGHT PERFORMANCES	23	Stability tests	Complying with EEC Directive 2006/42/EC	yes/no	yes
	24		Driving with /without load	Mph	5.3 / 5.6
	25	Speeds	Lifting with /without load	fpm	47.2 / 70.9
	26		Lowering with /without load	fpm	84.6 / 68.9
	27	Draw - bar - pull	At the hook max with /without load	lb	697 / 731
	28	Gradeability	with /without load	%	13 / 16
	29		Max. with /without load	%	20 / 25
	30	Weight	Truck, battery included	lb	4189*
	31	Axle load	Without load front / rear	lb	1874 / 2315
	32		With load front / rear	lb	5512 / 882
CHASSIS	33	Wheels	Number front / rear	n°	2 / 1
	34		Dimensions front	in	13x5x8
	35		Dimensions rear	in	13x5x8
	36	Wheel base	Y min. / max. (variable)	in	42.1 / 45.6
	37	Wheel track	Wheels centerline front	in	29
	38	Ground clearance	M With load at the lowest point	in	3.3
	39		M1 With load of wheel base	in	3.7
	40	Brakes	Service ( foot ) brake		hydraulic
	41		Hand parking brake		mechanical
	DRIVE	42	Battery	Type	
43			Volt/Ah (capacity at 5 hours' discharge)	V/Ah	36/270 - 36/500
44			Weight	lb	805* / 1213
45		Power steering	Hydraulic - electronically controlled	yes/no	yes
46		Electric motors	Hourly output of driving motor	Kw	3
47			Lifting motor, output	Kw	4.5
48		Traction Contr.	AC MOSFET	yes/no	yes
49	Pump control	Electronic by microprocessors	yes/no	yes	
50	Working Press.	For additional attachments	psi	2030	

★ On demand installation of the flashlight inside the height of the overhead guard h5

Data showed are not binding and are liable to variations. The constructor reserves the right of changes without notice.

# with mast in vertical position \* included side-shift  $Ast\ 3 = Wa + \sqrt{(x + b)^2 + (b^2/2)^2} + a$